

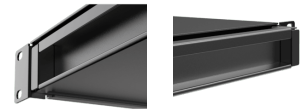
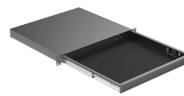


RD120L

19" rack drawer with keylock - 1 unit

Product information:

The RDx20x series of 19" rack drawers comes available in 1U, 2U and 3U unit heights with and without lock. The chassis is constructed of 1,5 mm thick cold rolled steel, while the tray is finished in 1,2 mm thick cold rolled steel. They feature full extension 3 section drawer rails, pushout holes on the back of the tray for cable insertion, a rubber anti slip liner, a full-width handle and optional back supports (RD2S) for increased load capacity (only 2U and 3U).



Product Features:

Dimensions		19.016 x 1.72 x 15.47 " (W x H x D)
	Inside	15.77 x 1.50 x 14.46 " (W x H x D)
Weight		11.71 lb
Max. load		17.64 lb

Variants:

- RD120L/B - Black version - With lock